

# DL-CL1 D-LIGHTZ

## SAFETY INSTRUCTIONS

1. Switch off before installation or before doing any maintenance work.
2. Licensed electrician for installation only.
3. IP20 for indoor use only, not for damp location.
4. Do not install any luminaire near the heat source.
5. Dimmable version could be compatible with a wide range of recommended TRIAC dimmers.
6. Non-dimmable version not for use with light dimmers.
7. Read instructions & check you have all the tools & accessories to complete the installation correctly.
8. NON-user-replaceable, professional electrician for installation and maintenance only.
9. If the external flexible cable or cord of this luminaire is damaged, it shall be exclusively replaced by the manufacturer or his service agent or a similar qualified person in order to avoid a hazard.

## WARNING

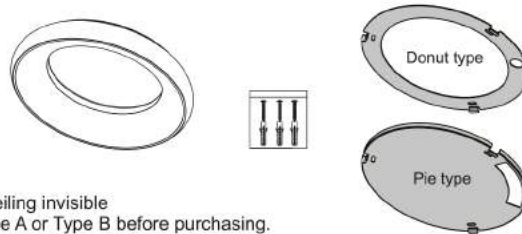
1. Switch off before installation.
2. Switch on only after complete installation and examination of the circuit.
3. Professional electrician for installation and maintenance only.



## Surface Mounted Installation Only

### Step 1

#### Accessories list



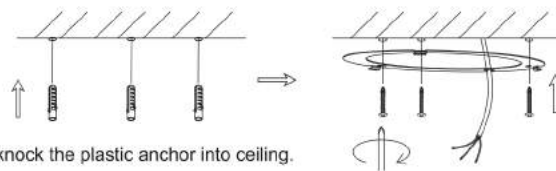
Surface mounted bracket

Type (A): Donut Version, ceiling visible

Type (B): Pie Version, completely closed, ceiling invisible

Surface mounted bracket, choose either type A or Type B before purchasing.

### Step 2

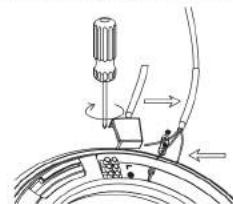


- 1 Determine the mounting location and knock the plastic anchor into ceiling.
- 2 Fix bracket onto ceiling with screws.

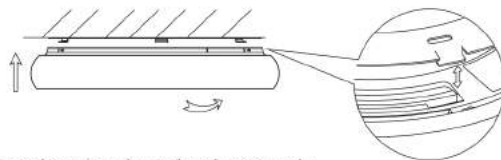
### Step 3

— L= Brown  
— N= Blue  
— ⊕= Yellow-Green

Thread the power line through the drivepipe and connect it to the terminal, then fasten the wires by line press cap.



### Step 4



Rotate lamp housing to bracket properly.

### Step 5

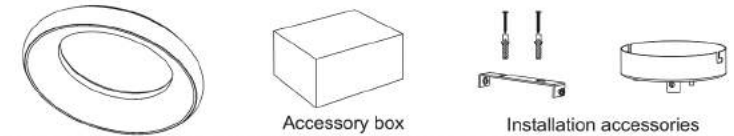
Finish



## Suspended Installation Only

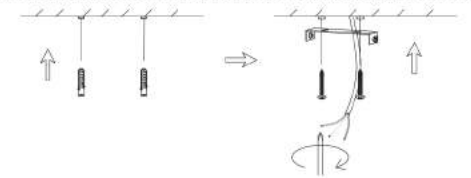
### Step 1

#### Accessories list



### Step 2

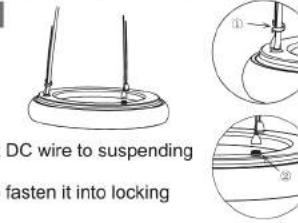
Determine the mounting location and knock the plastic anchor into ceiling, fix bracket with screws into the ceiling.



## Driver built-in

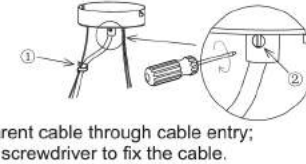
### Step 3

- 1 Attach transparent DC wire to suspending rope by clips;
- 2 Twist rope head to fasten it into locking device.



### Step 4

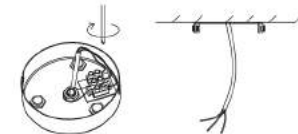
- 1 Insert the transparent cable through cable entry;
- 2 Tighten screw by screwdriver to fix the cable.



### Step 5

Feed the main cable in terminal block respectively.

— L= Brown  
— N= Blue  
— ⊕= Yellow-Green

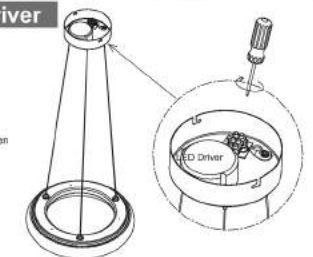


## External Driver

### Step 3

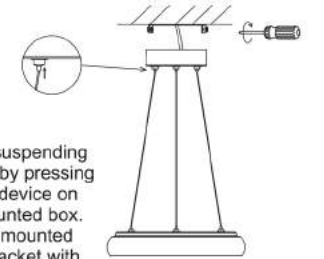
— L= Brown  
— N= Blue  
— ⊕= Yellow-Green

Feed the main cables in terminal block respectively.



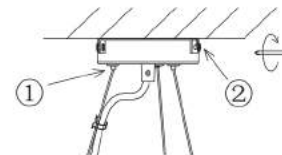
### Step 4

- 1 Adjust the suspending wire length by pressing the locking device on surface mounted box.
- 2 Fix surface mounted box onto bracket with screws.

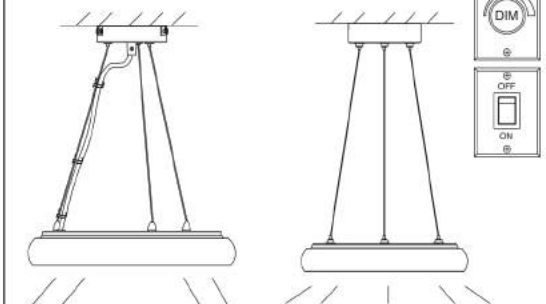


### Step 6

- 1 Adjust the suspending wire length by pressing the locking device on surface mount box,
- 2 Fix surface mount box onto bracket with screw.



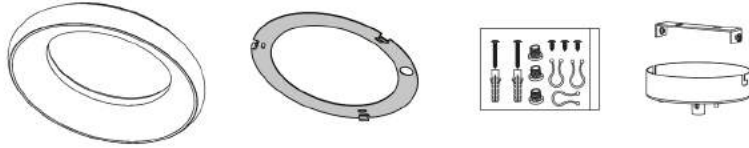
## Finish



# DL-CL1 D-LIGHTZ

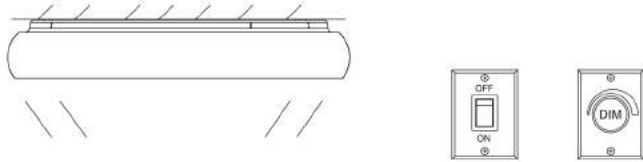
Two installation ways are optional: Surface Mounted / Suspended

## Accessories list



Specially designed lamp fixture and accessories pack can support two installation ways. Please check the accessories pack and choose the proper installation way.

Surface Mounted Installation please refer to Page 1.



## Suspended Installation

### Step 1

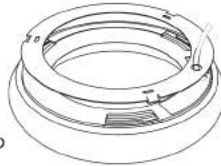
L= Brown  
N= Blue  
⊕= Yellow-Green

Feed the main cable in terminal block respectively.

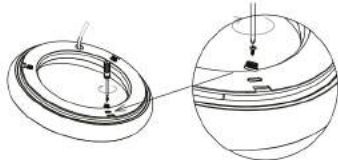


### Step 2

Rotate lamp housing to bracket properly.

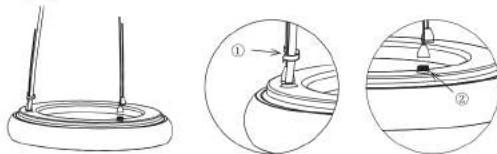


### Step 3



Fix three pieces of bases on surface mounted bracket.

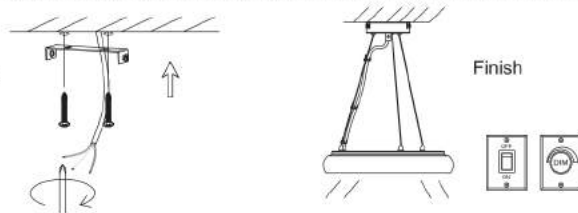
- ① Attach transparent DC wire to suspending rope by clips;
- ② Fix the suspending ropes on the bases.



### Step 4

Determine the mounting location and knock the plastic anchor into ceiling, fix bracket with screws onto the ceiling.

The rest steps are the same as the Suspended Installation Procedure from step 4 to step 7.



The light source of this luminaire is not replaceable; when the light source reaches its end of life the whole luminaire shall be replaced.